

ENERGY BULLETIN



Major Energies Marketers Association of Nigeria

By the MEMAN Competency Centre

Thursday, April 16, 2026

Lagos, Nigeria

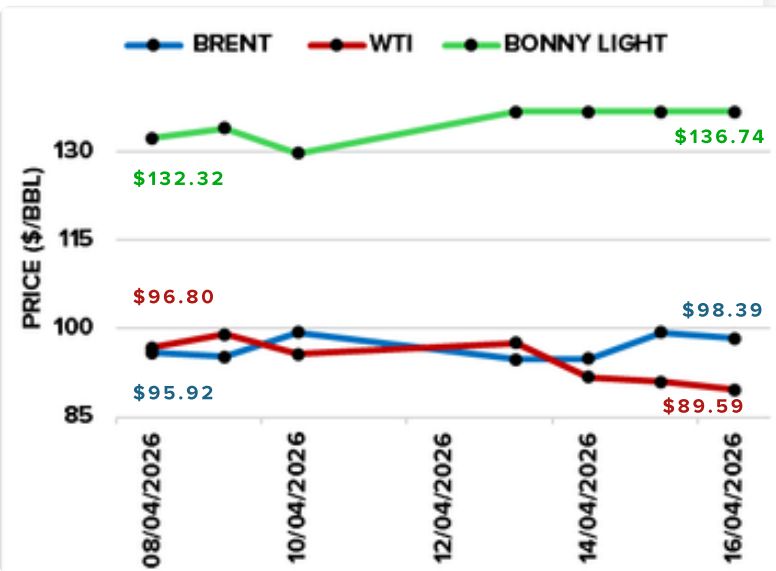
Market Summary

According to Platts, part of S&P Global, west african refined products were assessed steady day over day, while traders said the market remained slow, with less product arriving in Lome as the Dangote refinery met the majority of Nigeria's gasoline needs.

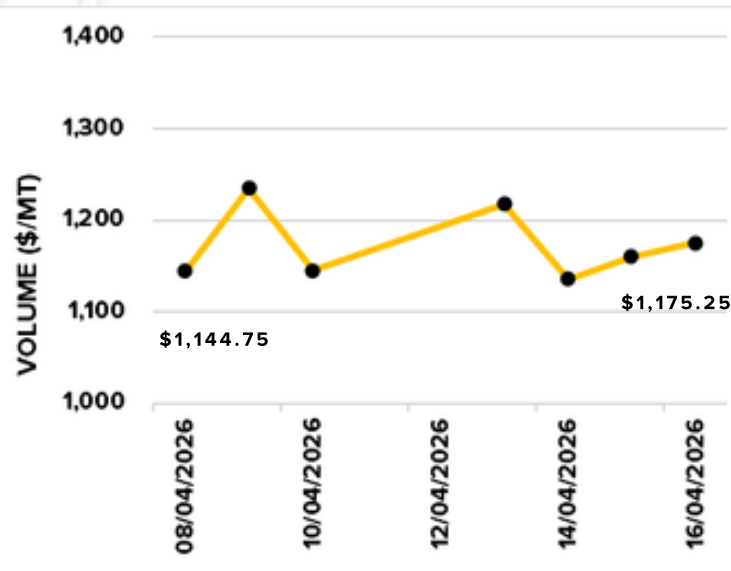
The NFEM rate showed a period of gradual appreciation for the Naira against the US Dollar between April 13 and April 16, 2026. The Naira strengthened by N13.88/\$, representing a 1.02% gain in value, reflecting a positive short-term movement in the currency's value within the Nigerian Foreign Exchange Market.

*****Disclaimer: International petroleum prices are extremely volatile and subject to multiple intraday fluctuations. The import parity cost presented here is a snapshot calculated using market prices as of 4:00 PM the previous business day.**

Crude Benchmark



ICE Futures EUR.

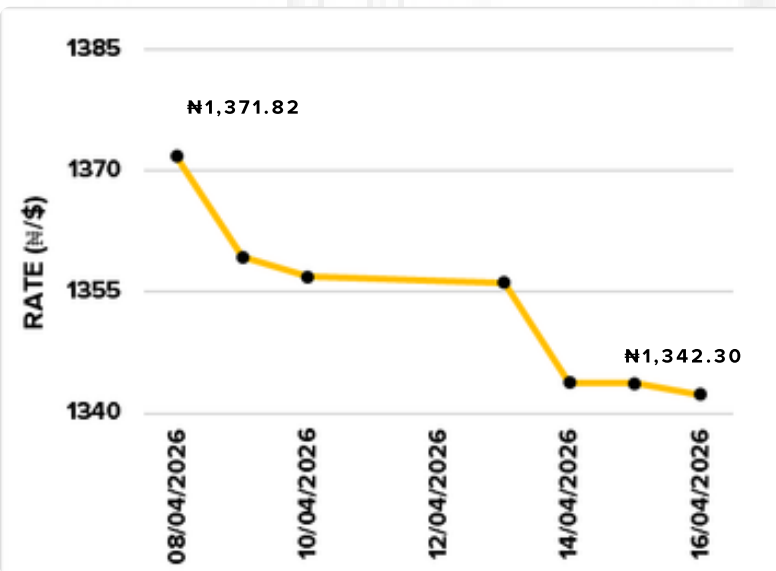


Dangote Prices

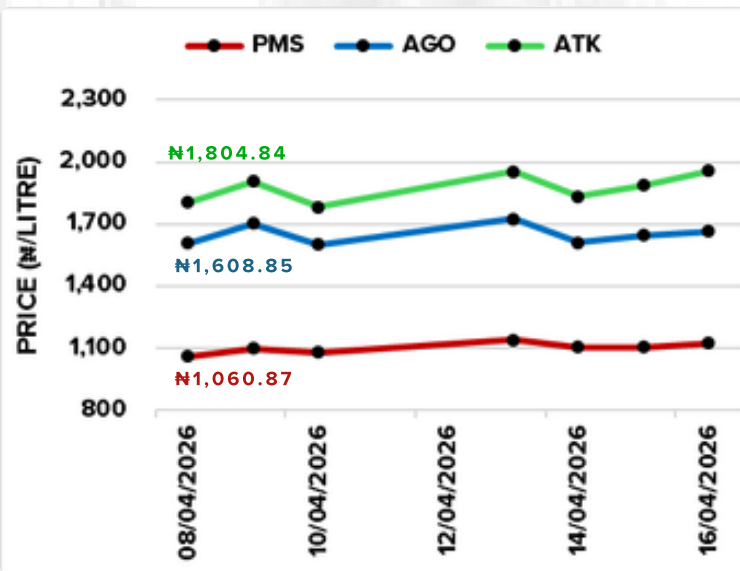
PMS	Coastal Price: ₦1,153.00/L	Gantry Price: ₦1,200.00/L
AGO	Coastal Price: \$1,275.25/MT	Gantry Price: ₦1,750.00/L
ATK	Coastal Price: \$1,730.75/MT	Gantry Price: ₦1,918.39/L
LPG	Gantry Price: ₦800,000.00/MT	

All Gantry Prices are Inclusive of NMDPRA

Exchange Rate



Estimated Import Parity Price into Tank (16/04/2026)



PMS	NGN/Litre
Average 30 Days	₦1,089.08/L ▲
Spot (ASPM)	₦1,124.23/L ▲
Spot (NPSC - NOJ)	₦1,124.19/L ▲
AGO	NGN/Litre
Average 30 Days	₦1,684.42/L ▲
Spot	₦1,664.24/L ▲
ATK	NGN/Litre
Average 30 Days	₦1,949.82/L ▲
Spot	₦1,956.12/L ▲

The estimated import parity cost into tank at NPSC/ASPM Jetty in Apapa is calculated based on the following assumptions:

Parameters	PMS	AGO	ATK
1. Jetty	ASPM & NPSC (NOJ)	NPSC	NPSC
2. Product Type	Gasoline STS Lome \$/MT (Platts, S&P Global Commodity Insights) ABNWG00	Diesel Low Sulfur STS Lome \$/MT (Platts, S&P Global Commodity Insights) ABNWFO0	Jet Fuel FOB STS Lome West Africa \$/MT (Platts, S&P Global Commodity Insights) AJWAA00
3. Product Quantity	38,000MT	20,000MT	15,000MT
4. Exchange Rate	CBN - Weighted Average Rate - Nigerian Foreign Exchange Market (NFEM)		
5. Finance Charges	32% per annum for 30 days		
6. Freight (STS and related charges)	10 days Ex Lome to ASPM & NPSC		
7. NPA \$/Metric Ton	Towage, berthage / mooring, ship dues, cargo dues, contingency, fire coverage, agency fee & VAT		
8. NIMASA \$	2% of local freight (STS)		
9. NMDPRA	0.5% MDGIF + 0.5% NMDPRA		
10. Other costs	₦2.00/litre	0	0

Disclaimer: The calculation is not reviewed, monitored, sponsored, endorsed or promoted by S&P Global Energy, or its affiliates or its or their third party licensors, and none of them make any representation or warranty regarding the calculation; neither S&P Global Energy, nor its affiliates, nor its or their third party licensors, shall have any liability for the calculation or any use of it. Crude prices are based on data sourced from the Central Bank of Nigeria (CBN), Reuters, and Trade Economics.

Ex-Depot Prices, Stock Market & Regional Pump Prices

Thursday, April 16, 2026

Lagos, Nigeria

Ex-Depot Price Range

Lagos

1. PMS: ₦1,208.00/L - ₦1,212.00/L
2. AGO: ₦1,752.00/L - ₦1,830.00/L
3. ATK: ₦2,400.00/L - ₦2,500.00/L
4. LPG: ₦1,030.00/KG - ₦1,230.00/KG

Warri

1. PMS: ₦1,235.00/L - ₦1,245.00/L
2. AGO: ₦1,845.00/L - ₦2,000.00/L

Vehicles

₦380.00/scm - ₦500.00/scm

Calabar

1. PMS: ₦1,228.00/L - ₦1,230.00/L
- AGO: ₦1,890.00/L - ₦2,000.00/L

Port Harcourt

1. PMS: ₦1,218.00/L - ₦1,225.00/L
2. AGO: ₦1,920.00/L - ₦2,000.00/L

CNG Price Range

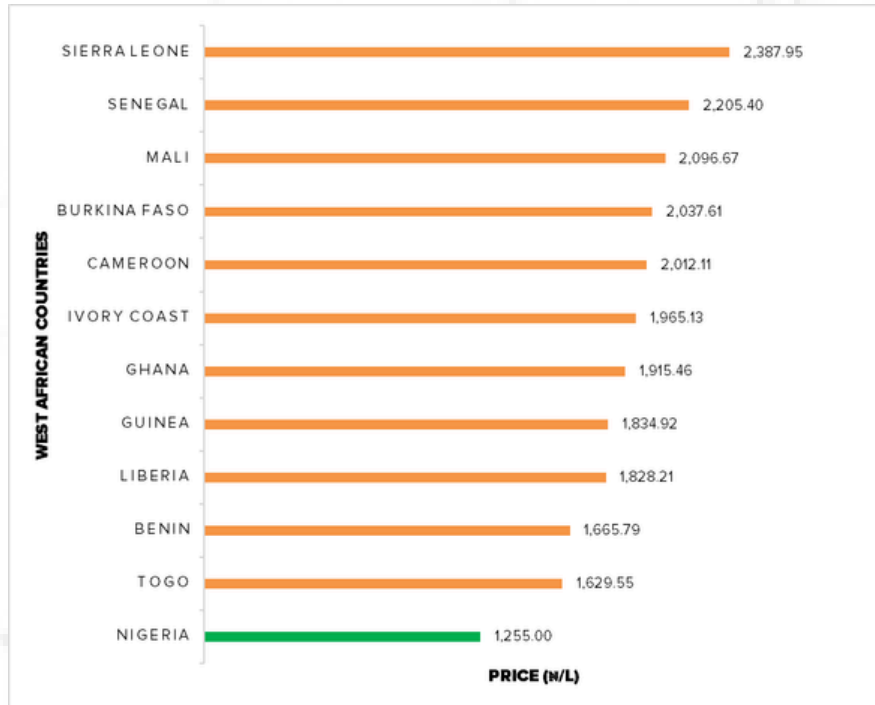
Stock Market

1. Seplat: ₦10,450.00	◆ 0.00%
2. Aradel: ₦1,547.50	▲ 9.99%
3. Geregu: ₦1,132.50	◆ 0.00%
4. TotalEnergies: ₦640.00	◆ 0.00%
5. Transpower: ₦302.90	◆ 0.00%
6. Conoil: ₦194.00	▲ 1.84%
7. Oando: ₦46.50	▲ 4.14%
8. Eterna: ₦34.20	◆ 0.00%

West African PMS Pump Prices

GlobalPetrolPrices.com

West African AGO Pump Prices



Please Note: The pump prices for Nigeria are calculated by MEMAN using the lowest pump prices in Lagos, Nigeria

Oil & Gas

- [Crude oil prices rise on renewed US-Iran talks](#)
- [Dangote to showcase refinery at Nasarawa trade fair](#)
- [Senate panel chair flags corruption in aviation sector](#)
- [Marketers dispute N3,300 aviation fuel price claim](#)
- [Audrey Joe-Ezigbo Unveils Growth Agenda to Scale Falcon's Role in Nigeria's Gas Economy](#)
- [NIPCO Gas Commissions CNG Stations in Asaba and Warri, Deepens Nigeria's Gas Revolution](#)
- [NLNG wraps Ulup VIBES 2026, doles out ₦250m business grants](#)
- [Climate threats worsen in Niger Delta, expert urges urgent action](#)
- [Oando signs Production Sharing Contract for Block KON 13 in Angola](#)
- [ExxonMobil visits NUPRC on planned multi-billion dollar FID](#)
- [Sahara Group backs FSO Cawthorne to drive Nigeria's energy security](#)
- [Nigeria inaugurates technical committee to review \\$200bn proposed Integrated Gas, Power](#)
- [Fuel marketers fault airlines on Jet A1 price](#)
- [Energy Markets Continue to React to Geopolitical Signals, Says Prateek Suri](#)
- [Local airlines threaten to withdraw services Monday](#)
- [Choking on insecurity, high fuel prices, by Adekunle Adekoya](#)
- [Oil, Condensate Output Averages 1.546mbpd In March After 1.84mbpd Peak](#)
- [What's Next for Oil Prices?](#)

Power & Renewable energy

- [Don urges FG to address power crisis](#)
- [Failing grid: Presidency opts for N10bn solar at Villa](#)
- [FG urged to fix power risks in elevators](#)
- [Odu'a, Elektron develop \\$40m, 50MW Lagos power plant](#)
- [Former VP Osinbajo to inaugurate road projects in Bayelsa as Gov Diri urges patience over independent power plant](#)
- [Sahara Power Group joins Mission 300 to accelerate electricity access for 300 million Africans by 2030](#)
- [Oando JV to power Bayelsa's 60MW independent power plant](#)